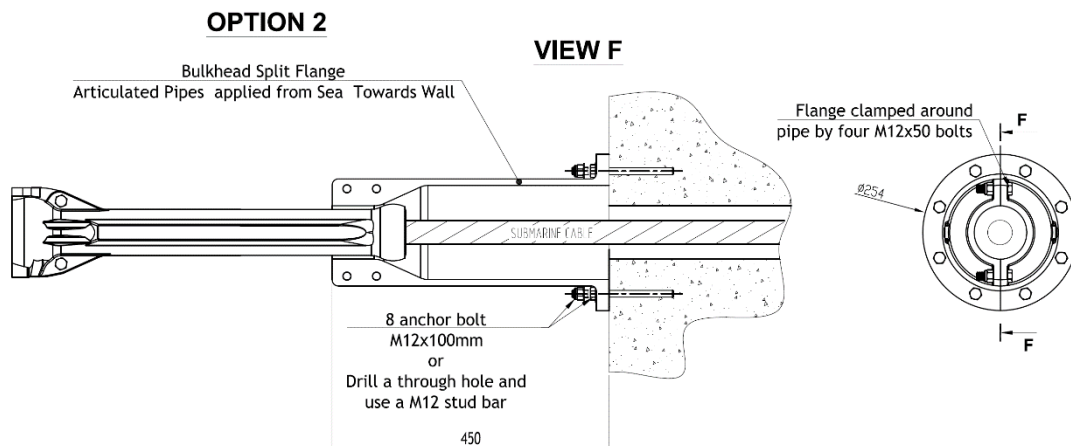
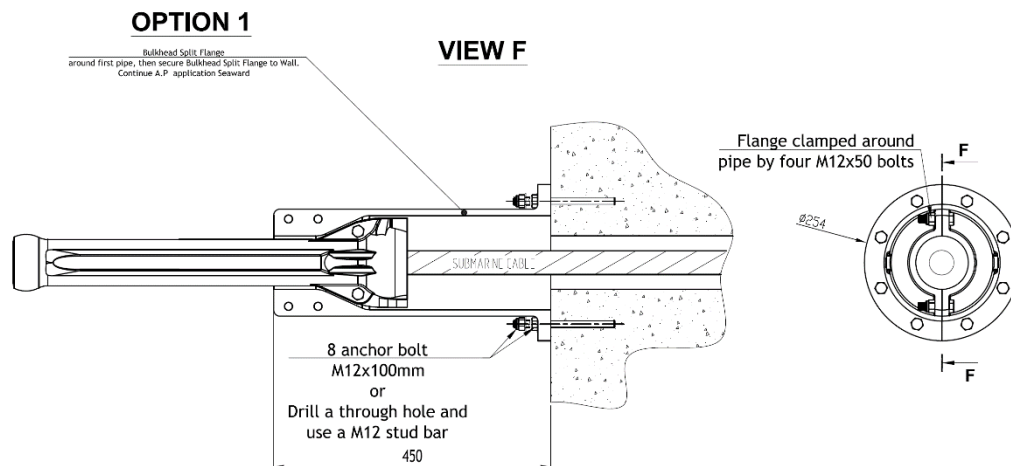


BULKHEAD SPLIT FLANGE

(for Articulated Pipes (CPS-PM47-58-500))



TECHNICAL SPECIFICATIONS AND NOTES:

Normalized Spheroidal Graphite Cast Iron:
ISO 1083/JS/400-15; EN-GJS-400-15 Minimum Wall Thickness 10 mm (+1.0/-0.5)

Approximate Weight of one casting in air =10.3 Kg (20.6 Kg for one pair)

General casting tolerances: ISO 8062 – CT8

Bulkhead Split Flange is used with WOCS Articulated Pipes CPS-PM47-58-500

Requires bolting together with **Four** A4 (316 grade) stainless steel M12 x 50 bolts with auto-lock nuts.

Secured Bulkhead Split Flange to concrete wall with **Eight** anchor bolt M12 x 100 bolts with auto-lock nuts (for the split flange)

All dimensions in mm